

B E R K E L E Y

E S T M M V



THE GENTLE MAN

Our new take on time-honoured traditions continue in today's Gentle Man. This connoisseur is the inspiration behind the Berkeley brand and to everything we do. You see it in the classic, high quality craftsmanship and in our meticulous attention to every detail.







INTRODUCING

SUNNY *SUEDE* SNEAKER

Made from smoothest suede with lining in supple calf leather that won't need any wearing in it. Set on gripped rubber soles for best comfort.



SUNNY SUEDE SNEAKER

Art.no: 1901

Sneaker made from water repellent top quality suede.
Soft calf skin lining and rubber sole. Removable insole dressed in calf skin.

Colour: Grey, Navy

Sizes: 40-46



WOMEN'S SUNNY SUEDE SNEAKER

Art.no: 1904

Sneaker made from water repellent top quality suede.
Soft calf skin lining and rubber sole. Removable insole dressed in calf skin.

Colour: Grey, Navy

Sizes: 36-41





LUIGI LEATHER SNEAKER

Art.no: 1902

Sneaker made from smooth aniline dyed top quality leather.
Soft calf skin lining. Removable insole dressed in calf skin.

Colour: White

Sizes: 40-46



WOMEN'S LUIGI LEATHER SNEAKER

Art.no: 1905

Sneaker made from smooth aniline dyed top quality leather.
Soft calf skin lining. Removable insole dressed in calf skin.

Colour: White

Sizes: 36-41



SUEDE CHELSEA BOOTS

Art.no: 1850

Classic Chelsea boots made from water repellent selected top quality suede. Soft calf skin lining and sole in TR rubber.

Colour: Brown, Black, Cognac

Sizes: 40-46



WOMEN'S SUEDE CHELSEA BOOTS

Art.no: 1851

Classic Chelsea boots made from water repellent selected top quality suede. Soft calf skin lining and sole in TR rubber.

Colour: Brown, Black, Cognac

Sizes: 36-41





ITALIAN SELECTION

CACTI, BEES & FLOWERS

We love our shirts in premium fabrics from the Italian producers Canclini & Albiate. Crisp linen and long stapled cotton that keeps you cool and gives ultimate comfort every day.



A **cactus** (plural: cacti, cactuses, or cactus) is a member of the plant family **Cactaceae**, a family comprising about 127 genera. Cacti have a variety of uses: many species are used as ornamental plants, others are grown for fodder and others for food. We have planted a **Saguaro cactus** on our shirt.



OTIS TAILORED SHIRT **ALBIATE**
 Art.no: 1908
 Jacquard woven oxford shirt in premium cotton from Italian weaver Albiate. Garment wash. Button down collar.
 Colour: Light Blue
 Sizes: s-xxxl



CUTLER TAILORED SHIRT ALBIATE
Art.no: 1907
 Allover printed shirt in premium linen.
 Lightweight with a garment wash for soft handfeel.
Colour: Denim Blue
Sizes: s-xxxl



DAVIS TAILORED SHIRT CANCLINI
Art.no: 1909
 Jacquard woven shirt in premium linen.
 Garment wash for a soft handle and crisp look.
Colour: White
Sizes: s-xxxl



PERRY TAILORED SHIRT CANCLINI
Art.no: 1910
 Jacquard woven shirt with bees in premium cotton.
 Soft handfeel for best comfort.
Colour: Blue
Sizes: s-xxxl





THE TWOFOLD SHIRT
OUR FINEST DRESS SHIRT IN TWOFOLD TWILL FABRIC



TWOFOLD REGULAR SHIRT
Art.no: 1107 *Easy Care*
Regular fit shirt in twofold cotton twill
with cut away collar and chest pocket.
Colour: White, Light Blue
Sizes: s-xxxl



TWOFOLD SLIM FIT SHIRT
Art.no: 1155 *Easy Care*
Slim fit shirt in twofold cotton twill
with cut away collar.
Colour: White, Light Blue
Sizes: s-xxl



WOMEN'S TWOFOLD SHIRT
Art.no: 1108 *Easy Care*
Shirt in twofold cotton twill
with classic collar.
Colour: White, Light Blue
Sizes: xs-xxl



CHILTON REGULAR DENIM SHIRT

Art.no: 1875*
Regular fit shirt in real indigo
denim twill with button down collar.
Colour: Dark Denim Blue
Sizes: s-5xl



CHILTON TAILORED DENIM SHIRT

Art.no: 1736*
Tailored fit shirt in real indigo
denim twill with button down collar.
Colour: Dark Denim Blue
Sizes: s-xxxl



WOMEN'S CHILTON DENIM SHIRT

Art.no: 1737*
Shirt in real indigo
denim twill with button down collar.
Colour: Dark Denim Blue
Sizes: xs-xxl



DOTHAM TAILORED DENIM SHIRT

Art.no: 1562*
Tailored fit shirt in printed real indigo
denim twill with cut away collar.
Colour: Denim Blue
Sizes: s-xxxl



WOMEN'S DOTHAM DENIM SHIRT

Art.no: 1563*
Shirt in printed real indigo
denim twill with classic collar.
Colour: Denim Blue
Sizes: xs-xxl



DOVER TAILORED DENIM SHIRT

Art.no: 1564*
Tailored fit shirt in real indigo
denim twill with cut away collar.
Colour: Denim Blue
Sizes: s-xxxl



WOMEN'S DOVER DENIM SHIRT

Art.no: 1565*
Shirt in real indigo
denim twill with classic collar.
Colour: Denim Blue
Sizes: xs-xxl

P.O.P
PINPOINT, OXFORD & POPLIN





PLAINFIELD, SUNDAY & PINSTRIPE



PLAINFIELD REGULAR SHIRT

Art.no: 1520* *Easy Care*

Regular fit shirt in twofold cotton pinpoint. Cut away collar and chest pocket.

Colour: Pink, White, Light Blue

Sizes: s-5xl



PLAINFIELD TAILORED SHIRT

Art.no: 1521* *Easy Care*

Tailored fit shirt in twofold cotton pinpoint with cut away collar.

Colour: Pink, White, Light Blue

Sizes: s-xxxl



WOMEN'S PLAINFIELD SHIRT

Art.no: 1522* *Easy Care*

Shirt in twofold cotton pinpoint with classic collar.

Colour: Pink, White, Light Blue

Sizes: xs-xxxl



WOMEN'S PLAINFIELD A-LINE SHIRT

Art.no: 1806* *Easy Care*

Shirt in twofold cotton pinpoint with classic collar and hidden front placket.

Colour: Pink, White, Light Blue

Sizes: xs-xxxl



CHECKFIELD REGULAR SHIRT
Art.no: 1523* *Easy Care*
 Regular fit shirt in twofold cotton poplin.
 Cut away collar and chest pocket.
Colour: Light Blue
Sizes: s-xxxl



CHECKFIELD TAILORED SHIRT
Art.no: 1524* *Easy Care*
 Tailored fit shirt in twofold cotton poplin with cut away collar.
Colour: Light Blue
Sizes: s-xxxl



WOMEN'S CHECKFIELD SHIRT
Art.no: 1525* *Easy Care*
 Shirt in twofold cotton poplin with classic collar.
Colour: Light Blue
Sizes: xs-xxl



STRIPEFIELD REGULAR SHIRT
Art.no: 1526* *Easy Care*
 Regular fit shirt in twofold cotton poplin.
 Cut away collar and chest pocket.
Colour: Light Blue
Sizes: s-xxxl



STRIPEFIELD TAILORED SHIRT
Art.no: 1527* *Easy Care*
 Tailored fit shirt in twofold cotton poplin with cut away collar.
Colour: Light Blue
Sizes: s-xxxl



WOMEN'S STRIPEFIELD SHIRT
Art.no: 1528* *Easy Care*
 Shirt in twofold cotton poplin with classic collar.
Colour: Light Blue
Sizes: xs-xxl



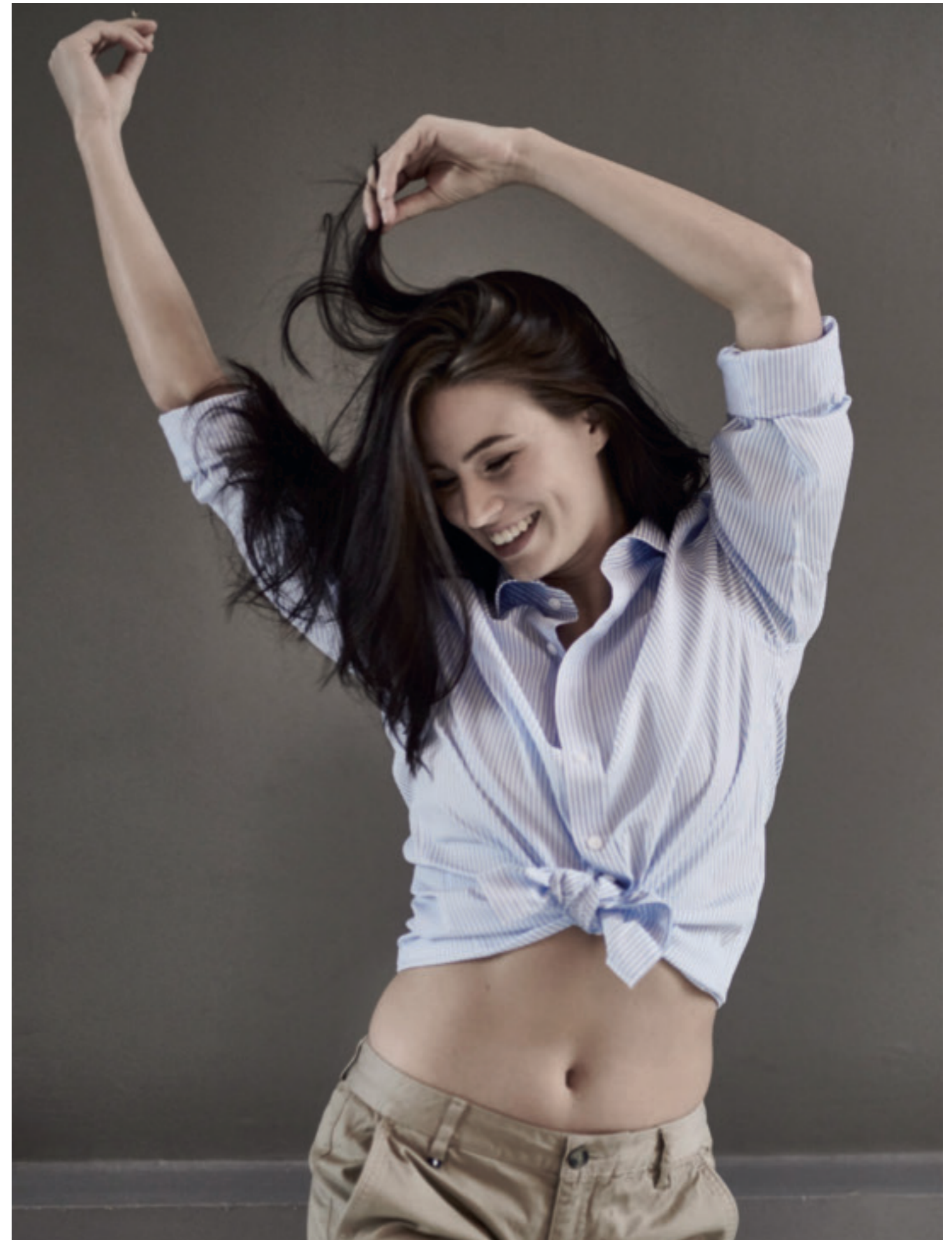
STRETCHFIELD REGULAR SHIRT
Art.no: 1640*
 Regular fit shirt in 97% cotton 3% lycra with cut away collar.
Colour: Black
Sizes: s-xxxl



STRETCHFIELD TAILORED SHIRT
Art.no: 1641*
 Tailored fit shirt in 97% cotton 3% lycra with cut away collar.
Colour: Black
Sizes: s-xxxl



WOMEN'S STRETCHFIELD SHIRT
Art.no: 1642*
 Shirt in 97% cotton 3% lycra with classic collar.
Colour: Black
Sizes: xs-xxl





THE OXFORD SHIRT



OXFORD REGULAR SHIRT
Art.no: 1577*
Regular fit shirt in cotton oxford with button down collar and chest pocket.
Colour: White, Light Blue
Sizes: s-xxxl



OXFORD TAILORED SHIRT
Art.no: 1578*
Tailored fit shirt in cotton oxford with button down collar.
Colour: White, Light Blue
Sizes: s-xxxl



WOMEN'S OXFORD SHIRT
Art.no: 1579*
Shirt in cotton oxford with button down collar.
Colour: White, Light Blue
Sizes: xs-xxl





PEMBROKE CLUB BLAZER
Art.no: 1165
Two button club blazer in Super 120' s wool. Embossed silver buttons.
One extra set with navy buttons included.
Colour: Navy
Sizes: 46-58, 146-158, D 96-116



WOMEN'S PEMBROKE CLUB BLAZER
Art.no: 1166
Two button club Blazer in Super 120' s wool. Embossed silver buttons.
One extra set with navy buttons included.
Colour: Navy
Sizes: 34-48



PINSTRIPLE BLAZER
Art.no: 1557
Pinstripe two button wool blazer.
Half lined with single went.
Colour: Navy
Sizes: 48-56



WOMEN'S PINSTRIPLE BLAZER
Art.no: 1569
Pinstripe two button wool blazer.
Half lined with single went.
Colour: Navy
Sizes: 36-42



CROYDON CLUB BLAZER

Art.no: 1613

Casual, unconstructed blazer in 98% cotton, 2% lycra with a soft sand washed hand feel. Unlined in tailored fit with double vent. Brass buttons.

Colour: Navy

Sizes: 46-56



WOMEN'S CROYDON CLUB BLAZER

Art.no: 1614

Casual, unconstructed blazer in 98% cotton, 2% lycra with a soft sand washed hand feel. Half lined in tailored fit with single vent. Brass buttons.

Colour: Navy

Sizes: 34-46



LYNDON DOUBLE-BREASTED BLAZER

Art.no: 1615

Double-breasted unconstructed blazer in 98% cotton 2% lycra. Sand washed with double vent and tailored fit. Crest buttons in antique silver.

Colour: French Navy

Sizes: 48-56



BURBANK BLAZER

Art.no: 1472

Two button blazer in merino wool. Half lined with single vent.

Colour: Brown

Sizes: 50-54



LYNDON SUNNY VARESE



COSY CASHMERE KNIT

Spoil yourself with soft and lightweight
Cashmere from Italian spinner Baruffa.





SIGNATURE CREW NECK

Art.no: 1934

Knitted crew neck sweater in cotton with embroidery at chest. Rib at neck and hem.

Colour: Navy

Sizes: s-xxxl



BERKELEY CREW NECK

Art.no: 1648

Knitted crew neck sweater in cotton with embroidery at chest. Rib at neck and hem.

Colour: Navy Mélange

Sizes: xxs-xxxl





BROCKTON HALF ZIP

Art.no: 1730*

Knitted half zip sweater in cotton. Rib at neck and hem.

Colour: Black, Light Grey, Navy

Sizes: s-xxxl



BROCKTON CREW NECK

Art.no: 1611*

Knitted crew neck sweater in cotton. Rib at neck and hem.

Colour: Black, Light Grey, Navy

Sizes: s-xxxl



BROCKTON HALF ZIP



BROCKTON V-NECK

Art.no: 1011*

Knitted v-neck sweater in cotton. Rib at neck and hem.

Colour: Black, Dark Grey, Navy **Sizes:** s-5xl
Colour: Light Grey, Blue, Green, Orange, Red **Sizes:** s-xxxl



WOMEN'S BROCKTON V-NECK

Art.no: 1440*

Knitted v-neck sweater in cotton. Rib at neck and hem.

Colour: Black, Dark Grey, Light Grey, Navy, Blue, Green, Orange, Red
Sizes: xs-xxl



WILTON CASHWOOL CREW NECK

Art.no: 1722*

Knitted crew neck sweater in extra fine merino wool with a soft cashmere feeling.

Colour: Black, Grey, Navy

Sizes: s-xxxl



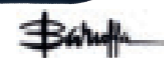
WILTON CASHWOOL V-NECK

Art.no: 1352*

Knitted v-neck sweater in extra fine merino wool with a soft cashmere feeling.

Colour: Black, Grey, Navy

Sizes: s-xxxl



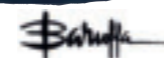
WOMEN'S WILTON CASHWOOL V-NECK

Art.no: 1480*

Knitted v-neck sweater in extra fine merino wool with a soft cashmere feeling.

Colour: Black, Grey, Navy

Sizes: xs-xxl





WEBSTER ROLL NECK
Art.no: 1587
 Knitted roll neck sweater in a soft
 wool/cashmere blend.
Colour: Grey Mélange
Sizes: s-xxxl



WILTON CASHWOOL CARDIGAN
Art.no: 1362
 Knitted cardigan in extra fine merino wool with
 a soft cashmere feeling. Matching elbow patches.
Colour: Black
Sizes: xs-xxxl



WINDSOR BRAIDED CREW NECK
Art.no: 1610
 Yarn dyed cable crew knit sweater in cotton.
 Contrast yarn on hem and cuff. Soft hand feel.
Colour: Fuchsia Rose
Sizes: xs-xxxl





ALFIE SWEATER



ALFIE SWEATER

Art.no: 1930

Crew neck sweatshirt in cotton/polyester jersey.

Colour: Black, Grey Mélange, Navy

Sizes: s-5xl



WOMEN'S ALFIE SWEATER

Art.no: 1931

Crew neck sweatshirt in cotton/polyester jersey.

Colour: Black Grey Mélange, Navy

Sizes: xs-xxl



COMMUTER SWEATER

Art.no: 1932

Crew neck sweatshirt in cotton/polyester jersey with embossed print at chest.

Colour: Black

Sizes: s-xxxl



WOMEN'S COMMUTER SWEATER

Art.no: 1933

Crew neck sweatshirt in cotton/polyester jersey with embossed print at chest.

Colour: Black

Sizes: xs-xxl



SUNDAY SWEATER

Art.no: 1871

Crew neck sweatshirt in cotton jersey with embroidery at chest. Garment washed.

Colour: Grey Mélange

Sizes: s-xxxl



WOMEN'S SUNDAY SWEATER

Art.no: 1872

Crew neck sweatshirt in cotton jersey with embroidery at chest. Garment washed.

Colour: Grey Mélange

Sizes: xs-xxl





HAMILTON HOOD

Art.no: 1210

Zip hood sweatshirt in cotton/polyester jersey.

Colour: Grey Mélange, Black

Sizes: s-xxxl



WOMEN'S HAMILTON HOOD

Art.no: 1211

Womens zip hood sweatshirt in cotton/polyester jersey.

Colour: Grey Mélange, Black

Sizes: xs-xl

C A M D E N
THE ICONIC POLO SHIRT





CAMDEN STRETCH



CAMDEN STRETCH POLO
Art.no: 1541*
Polo piqué in 95% combed cotton, 5% elastane.
Colour: Black, Storm Blue, White, Navy, Grey Mélange
Sizes: s-xxxl



CAMDEN POLO

Art.no: 1191*

Polo piqué in combed cotton.

Colour: Black, White, Navy **Sizes:** s-5xl

Colour: Grey Mélange, Light Blue, Sky Blue, Storm Blue, Pink, Red **Sizes:** s-xxxl



WOMEN'S CAMDEN POLO

Art.no: 1192*

Polo piqué in 95% combed cotton, 5% elastane.

Colour: Black, Grey Mélange, Light Blue, White, Navy, Sky Blue, Storm Blue, Pink, Red

Sizes: xs-xxl





EVERETT POLO
Art.no: 1701*
Polo piqué in combed cotton. Tonal buttons.
Colour: Navy, White, Black
Sizes: s-5xl



WOMEN'S EVERETT POLO
Art.no: 1702*
Polo piqué in combed cotton.
Colour: Navy, White, Black
Sizes: xs-xxl



CHESTER CHINOS

Art.no: 1706*

Chino in a comfortable 97% cotton, 3% lycra blend. Garment wash.

Colour: Khaki Beige

Sizes: waist 29-38, length 32,34



WOMEN'S CHESTER CHINOS

Art.no: 1707*

Chino in a comfortable 97% cotton, 3% lycra blend. Garment wash.

Colour: Khaki Beige

Sizes: waist 27-34, length 32



SPENCER SHORT PANTS

Art.no: 1715

Short pant in a comfortable 97% cotton, 3% lycra blend. Garment wash.

Colour: Khaki Beige

Sizes: waist 29-36



WOMEN'S SPENCER SHORT PANTS

Art.no: 1716

Short pant in a comfortable 97% cotton, 3% lycra blend. Garment wash.

Colour: Khaki Beige

Sizes: waist 27-34



FIND YOUR FIT

BERKELEY
OUTERWEAR





BROOKS BOMBER



BROOKS BOMBER JACKET

Art.no: 1708*

Bomber jacket in water repellent nylon. Rib at bottom and cuff.

Colour: Navy, Black

Sizes: s-xxxl



WOMEN'S BROOKS BOMBER JACKET

Art.no: 1709*

Bomber jacket in water repellent nylon. Rib at bottom and cuff.

Colour: Navy, Black

Sizes: xs-xxl



MONROE CAR COAT

Art.no: 1713*

Soft wind and water repellent car coat made in a polyester/nylon blend. Light padded with front zip.

Colour: Navy, Black

Sizes: s-5xl



WOMEN'S MONROE CAR COAT

Art.no: 1714*

Soft wind and water repellent car coat made in a polyester/nylon blend. Light padded with front zip.

Colour: Navy, Black

Sizes: xs-xxl



CONCORD JACKET

Art.no: 1628

Garment washed catalina jacket in cotton twill.

Colour: Navy, Off-white

Sizes: s-xxxl



WOMEN'S CONCORD JACKET

Art.no: 1629

Garment washed catalina jacket in cotton twill.

Colour: Navy, Off-white

Sizes: xs-xxl



A man and a woman are standing on a cobblestone street in a European town. The man, on the left, has long, wavy brown hair and a beard, and is wearing a dark blue quilted jacket over a white shirt and grey trousers. The woman, on the right, has long dark hair and is wearing a similar dark blue quilted jacket over a white shirt and tan trousers. They are both looking towards the camera. The background shows a street with wooden buildings and a green awning.

WE *LOVE*
LAYERING

MONROE + MILAN + ALFORD = TRUE



MILAN VEST



MILAN VEST

Art.no: 1748*

Light padded vest in nylon with matching cord pipings.

Colour: Navy, Black

Sizes: s-5xl



WOMEN'S MILAN VEST

Art.no: 1808*

Light padded vest in nylon with matching cord pipings.

Colour: Navy, Black

Sizes: xs-xxl



ALFORD LIGHTWEIGHT JACKET

Art.no: 1746*

Lightweight jacket in nylon with polyester cluster filling. Two zip pockets.

Colour: Navy, Black

Sizes: s-5xl



WOMEN'S ALFORD LIGHTWEIGHT JACKET

Art.no: 1747*

Lightweight jacket in nylon with polyester cluster filling. Two zip pockets.

Colour: Navy, Black

Sizes: xs-xxl



WAXFORD JACKET

Art.no: 1632*

Classic wax jacket in water repellent cotton canvas. Cord collar and checkered flannel lining.

Colour: Black

Sizes: s-xxxl



WOMEN'S WAXFORD JACKET

Art.no: 1633*

Classic wax jacket in water repellent cotton canvas. Cord collar and checkered flannel lining.

Colour: Black

Sizes: xs-xxl



A full-page photograph of a man with long, wavy blonde hair and a light beard, looking directly at the camera. He is wearing a dark navy blue or black jacket with a high collar and multiple pockets, over a light-colored collared shirt. He is also wearing light-colored, possibly khaki, trousers. He stands in front of a weathered background consisting of a red brick wall on the left and a wooden door with peeling blue and red paint in the center. The lighting is dramatic, with strong shadows.

COMMUTER
STRETCH JACKET



COMMUTER STRETCH JACKET

Art.no: 1868*

2-way stretch jacket in polyester. Bonded inside with 30D knitted fabric. Wind and water repellent with Eco Rudolf Bionic treatment. Critical taped seams.

Colour: Black

Sizes: s-5xl



WOMEN'S COMMUTER STRETCH JACKET

Art.no: 1869*

2-way stretch jacket in polyester. Bonded inside with 30D knitted fabric. Wind and water repellent with Eco Rudolf Bionic treatment. Critical taped seams.

Colour: Black

Sizes: xs-xxl



COMMUTER STRETCH PARKA

Art.no: 1866

4-way stretch parka in a 2-layer polyester/spandex blend. Wind and water repellent with Eco Rudolf Bionic treatment.

Colour: Black

Sizes: s-xxxl



WOMEN'S COMMUTER STRETCH PARKA

Art.no: 1867

4-way stretch parka in a 2-layer polyester/spandex blend. Wind and water repellent with Eco Rudolf Bionic treatment.

Colour: Black

Sizes: xs-xxl



DERBY QUILT JACKET

Art.no: 1626*

Diamond quilt jacket in polyester.
Collar, inside cuff and bindings in matching cord.

Colour: Navy, Olive

Sizes: s-xxxl



WOMEN'S DERBY QUILT JACKET

Art.no: 1627*

Diamond quilt jacket in polyester.
Collar, inside cuff and bindings in matching cord.

Colour: Navy, Olive

Sizes: xs-xxl



NORWOOD FIELD JACKET

Art.no: 1630*

Water repellent field jacket in micro poplin.
Thinsulate™ padding and cotton oxford lining.
Adjustable waistband and sleeve strap.

Colour: Black, Navy

Sizes: s-xxxl



WOMEN'S NORWOOD FIELD JACKET

Art.no: 1631*

Water repellent field jacket in micro poplin.
Thinsulate™ padding and cotton oxford lining.
Adjustable waistband and sleeve strap.

Colour: Black, Navy

Sizes: xs-xxl





YALE PEA COAT

Art.no: 1580

Classic double breasted pea coat in Melton wool. Padded quilt lining.

Colour: Navy

Sizes: s-xxl



WOMEN'S YALE PEA COAT

Art.no: 1581

Classic double breasted pea coat in Melton wool. Padded quilt lining.

Colour: Navy

Sizes: s-xxl



KENSINGTON DOWN JACKET

Art.no: 1573

Down jacket with 90/10 duck down filling. Water repellent shellfabric in polyester.

Colour: Blue

Sizes: s-xxl



HARTFORD EXPEDITION DOWN PARKA

Art.no: 1460

Down parka in water repellent polyester. 50/50 goose down/feather filling. Application at sleeve. Removable hood with removable faux fur.

Colour/Sizes: Green s-xxl, Black m-xxxl





HANDMADE IN *ITALY*



VARESE BRIEFCASE

Art.no: 1807

Italian hand made brefcase in grained leather
with a two-way zip fastening and front slip.
Fully lined with soft alcantara. Internal zipped
and pouch pockets, laptop sleeve & pen holders

Colour: Ash Grey

Sizes: 40x30x9



WOODLEY OVERNIGHTER

Art.no: 1765

Overnight leather bag with detachable shoulder strap and inside pocket.

Colour: Dark Brown

Sizes: 48x26x23 cm



WOODLEY COMPUTER BAG

Art.no: 1761

Computer leather bag with detachable shoulder strap. Zip pocket and laptop compartment inside.

Colour: Dark Brown

Sizes: 28x36x9 cm



WOODLEY WASHBAG

Art.no: 1766

Leather washbag with nylon lining and three inner pockets.

Colour: Dark Brown

Sizes: 25x15x11 cm



WOODLEY NAMETAG

Art.no: 1764

Leather nametag with space for personal imprint

Colour: Dark Brown

Sizes: 6,5x11 cm



WOODLEY KEY RING

Art.no: 1763

Leather key ring with engraved logo.

Colour: Dark Brown

Sizes: 3x10 cm





COWENTRY WEEKENDER
Art.no: 1333
 Weekend leather bag with detachable shoulder strap.
 Pocket at outside and inside.
Colour: Brown
Sizes: 56x33x30 cm



COWENTRY OVERNIGHTER
Art.no: 1348
 Overnight leather bag with detachable shoulder strap and inside pocket.
Colour: Brown
Sizes: 48x26x23 cm



COWENTRY COMPUTER BAG
Art.no: 1331
 Computer leather bag with detachable shoulder strap.
 Zip pocket and laptop compartment inside.
Colour: Brown
Sizes: 28x36x9 cm



COWENTRY NAMETAG
Art.no: 1347
 Leather nametag with space for personal imprint
Colour: Brown
Sizes: 6,5x11 cm



COWENTRY KEY RING
Art.no: 1346
 Leather key ring with engraved logo.
Colour: Brown
Sizes: 3x10 cm



COMMUTER OVERNIGHTER

Art.no: 1873

Overnighter bag in polyurethane with waterproof zipper.
Detachable shoulder strap, nylon lining and one inside pocket.

Colour: Black

Sizes: 46x33x20 cm



COMMUTER WASHBAG

Art.no: 1874

Washbag in polyurethane with waterproof zipper.
Nylon lining and three inner pockets.

Colour: Black

Sizes: 25x15x11 cm



BRKLY CAP

Art.no: 1912

Cotton twill cap with tonal 3D embroidery at front.

Adjustable velcro strap.

Colour: Black, Navy

Sizes: One size



FLAMINGO SWIMSHORTS

Art.no: 1911

Swimshorts in a soft, quick drying polyester.

Elastic waistband and mesh lining. Back pocket with velcro.

Colour: Light Blue

Sizes: s-xxxl



BINGLEY BELT

Art.no: 1805

Suede belt with nickel brushed buckle.

Colour: Brown

Sizes: 85, 95, 105 cm, width 3,5 cm



COWENTRY BELT

Art.no: 1337

Braided leather belt with nickel brushed buckle.

Colour: Brown

Sizes: 95 cm, width 3,5 cm





RINGWOOD KNITTED TIE

Art.no: 1566
Knitted wool tie with dots.
6 cm front blade.
Colour: Brown
Sizes: One size



BRKLY TIE

Art.no: 1772
Knitted wool tie.
6 cm front blade.
Colour: Black
Sizes: One size



CIRCLE TIE

Art.no: 1568
Jacquard woven silk tie.
8 cm front blade.
Colour: Black
Sizes: One size



RUMNEY CLUB TIE

Art.no: 1623
Jacquard woven silk tie.
8 cm front blade.
Colour: Green
Sizes: One size



RUMNEY CLUB TIE

Art.no: 1623
Jacquard woven silk tie.
8 cm front blade.
Colour: Fuchsia Rose
Sizes: One size



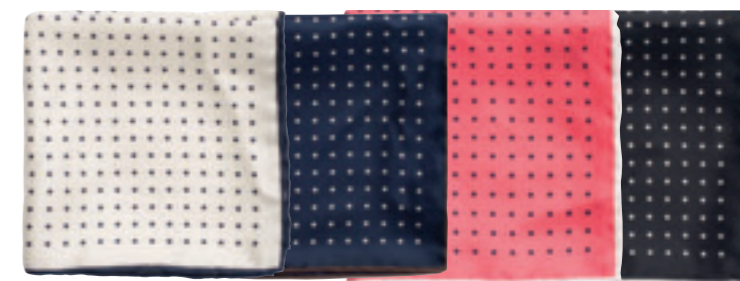
BERKELEY CUFFLINKS

Art.no: 1256
Cufflinks in solid metal with colored enamel at top. Comes in gift box.
Colour: Red, Blue, Orange
Sizes: One size



SHARK HANKY

Art.no: 1625
Printed hanky in silk.
Colour: Fuchsia Rose, Navy
Sizes: 30x30 cm



DOT SILK HANKY

Art.no: 1574
Printed hanky in silk.
Colour: Offwhite/Navy, Navy/White, Fuchsia Rose, Black/White
Sizes: 30x30cm



BROOKS BEANIE

Art.no: 1651

Rib knitted beanie in soft cotton.

Colour: Navy, Grey, Black

Sizes: One size



SEVEN DAYS SOCKS

Art.no: 1725

Gift box with seven pairs of socks.

Cotton blend with polyamide and lycra.

Colour: Black/Grey

Sizes: 36-40, 41-45



MADBURY SCARF

Art.no: 1589

Supersoft scarf in brushed viscose.

Colour: Beige/Blue

Sizes: One size



MADBURY SCARF

Art.no: 1589

Supersoft scarf in brushed viscose.

Colour: Grey/Blue

Sizes: One size



HATFIELD SCARF

Art.no: 1588

Soft checkered wool scarf

Colour: Green/Blue Checkered

Sizes: One size



SEAFORD HANKY

Art.no: 1771

Woven hanky in printed soft wool.

Colour: Navy/Grey

Sizes: 30x30 cm



SEAFORD HANKY

Art.no: 1771

Woven hanky in printed soft wool.

Colour: Grey/Navy

Sizes: 30x30 cm



RICHMOND HANKY

Art.no: 1774

Woven hanky in printed soft wool.

Colour: Navy/Wine

Sizes: 30x30 cm



B E R K E L E Y

E S T M M V

berkeleycompany.com